

OCEAN SEAFREIGHT CONTAINER GUIDELINES

Standard General Purpose Containers

20' Standard GP							
Inside Length	Inside Width	Inside Height	Door Width	Door Height	Max Volume	Max Weight	Tare Weight
19'4"	7'8"	7'10"	7'8"	7'6"	1,172 cft	47,900lb	4,916lb
5.90m	2.35m	2.39m	2.34m	2.28m	33.2m ³	21,770kg	2,230kg

40' Standard GP							
Inside Length	Inside Width	Inside Height	Door Width	Door Height	Max Volume	Max Weight	Tare Weight
39'5"	7'8"	7'10"	7'8"	7'6"	2,390cft	59,040lb	8,160lb
12.03m	2.35m	2.39m	2.34m	2.28m	67.7m ³	26,780kg	3,700kg



40' High Cube							
Inside Length	Inside Width	Inside Height	Door Width	Door Height	Max Volume	Max Weight	Tare Weight
39'5"	7'8"	8'10"	7'8"	8'5"	2,694cft	58,450lb	8,750lb
12.03m	2.35m	2.69m	2.33m	2.58m	76.3m ³	26,510kg	3,970kg

Refrigerated (Reefer) Containers



20' Reefer							
Inside Length	Inside Width	Inside Height	Door Width	Door Height	Max Volume	Max Weight	Tare Weight
17'8"	7'5"	7'5"	7'5"	7'3"	1,000cft	45,760lb	7,040lb
5.42m	2.27m	2.26m	2.26m	2.21m	28.3m ³	28,000kg	3,200kg

40' Reefer							
Inside Length	Inside Width	Inside Height	Door Width	Door Height	Max Volume	Max Weight	Tare Weight
37'8"	7'5"	7'2"	7'5"	7'0"	2,040cft	56,276lb	10,780lb
11.49m	2.27m	2.19m	2.28m	2.15m	57.8m ³	25,580kg	4,900kg

40' High Cube Reefer							
Inside Length	Inside Width	Inside Height	Door Width	Door Height	Max Volume	Max Weight	Tare Weight
37'11"	7'6"	8'2"	7'6"	8'0"	2,344cft	57,561lb	9,900lb
11.55m	2.29m	2.50m	2.29m	2.44m	66.6m ³	25,980kg	4,500kg

Open Top Containers

20' Open Top - Upgrade Also Available							
Inside Length	Inside Width	Inside Height	Door Width	Door Height	Max Volume	Max Weight	Tare Weight
19'4"	7'7"	7'8"	7'6"	7'2"	1,136cft	47,620lb	5,280lb
5.89m	2.31m	2.35m	2.28m	2.18m	32.23m ³	21,600kg	2,400kg

40' Open Top							
Inside Length	Inside Width	Inside Height	Door Width	Door Height	Max Volume	Max Weight	Tare Weight
39'5"	7'8"	7'8"	7'8"	7'5"	2,350cft	58,710lb	8,490lb
12.03m	2.35m	2.34m	2.34m	2.27m	65.5m ³	26,630kg	3,850kg



Please visit our website at www.eesclear.com

OCEAN SEAFREIGHT CONTAINER GUIDELINES

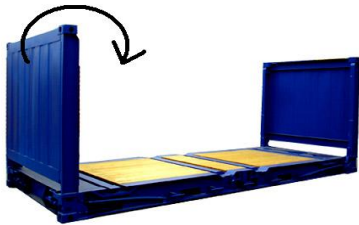
Flat Rack Containers

20' Flat Rack							
Inside Length	Inside Width	Inside Height	Door Width	Door Height	Max Volume	Max Weight	Tare Weight
18'5"	7'3"	7'4"	-	-	-	47,333lb	5,578lb
5.62m	2.20m	2.23m	-	-	-	21,740kg	2,530kg

40' Flat Rack							
Inside Length	Inside Width	Inside Height	Door Width	Door Height	Max Volume	Max Weight	Tare Weight
39'7"	6'10"	6'5"	-	-	-	85,800lb	12,081lb
12.08m	2.44m	2.10m	-	-	-	39,000kg	5,480kg



Flat Rack Collapsible Containers



20' Flat Rack Collapsible							
Inside Length	Inside Width	Inside Height	Door Width	Door Height	Max Volume	Max Weight	Tare Weight
18'6"	7'3"	7'4"	-	-	-	61,117lb	6,061lb
5.62m	2.21m	2.23m	-	-	-	27,730kg	2,750kg

40' Flat Rack Collapsible							
Inside Length	Inside Width	Inside Height	Door Width	Door Height	Max Volume	Max Weight	Tare Weight
39'7"	6'10"	6'5"	-	-	-	85,800lb	12,787lb
12.08m	2.13m	2.04m	-	-	-	39,000kg	5,800kg

Platform Containers

20' Platform							
Inside Length	Inside Width	Inside Height	Door Width	Door Height	Max Volume	Max Weight	Tare Weight
19'11"	8'0"	7'4"	-	-	-	52,896lb	6,061lb
6.06m	2.44m	2.23m	-	-	-	24,000kg	2,750kg

40' Platform							
Inside Length	Inside Width	Inside Height	Door Width	Door Height	Max Volume	Max Weight	Tare Weight
40'0"	8'0"	6'5"	-	-	-	86,397lb	12,783lb
12.18m	2.40m	1.95m	-	-	-	39,200kg	5,800kg



The above information is a guide as details may vary between carriers

For all enquiries, please contact our office and we will happily assist

FREMANTLE

Email: info@eescair.com

Telephone: +61 8 9414 7711

Fax: +61 8 9414 8822

Please visit our website at www.eescair.com